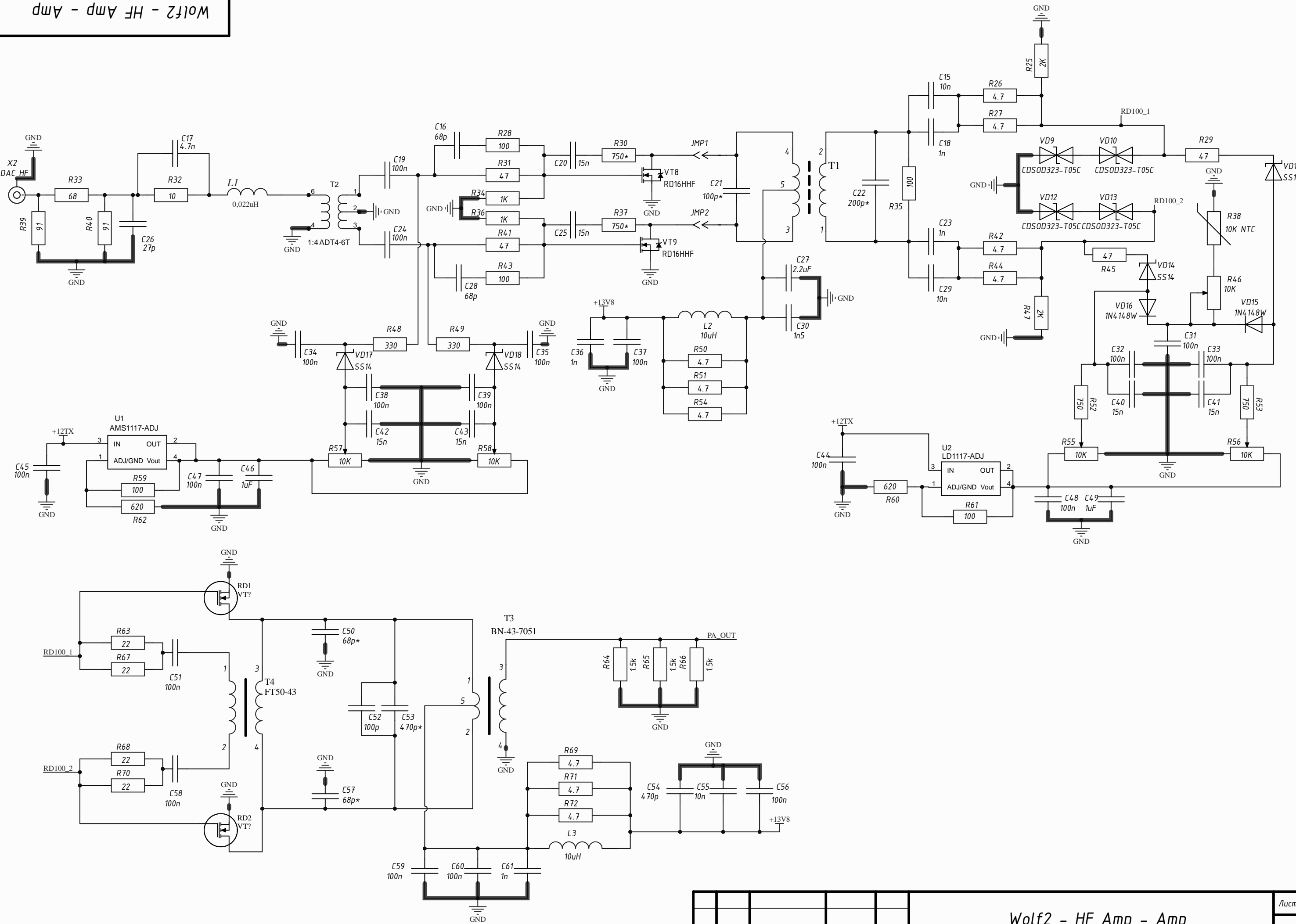


Инд. № подл.	Подп. и дата
Взам. инд. №	Инд. № дудл.
Подп. и дата	Подп. и дата
Инд. № подл.	Подп. и дата



Подп. и дата

Инд. № дудл.

Взам. инд. №

Подп. и дата

Инд. № подл.

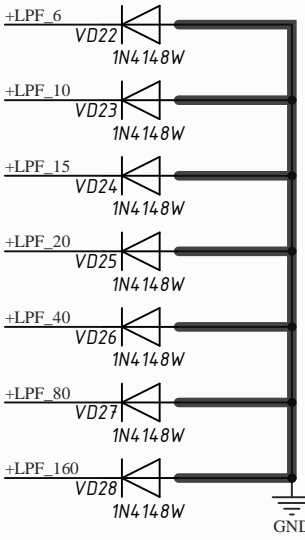
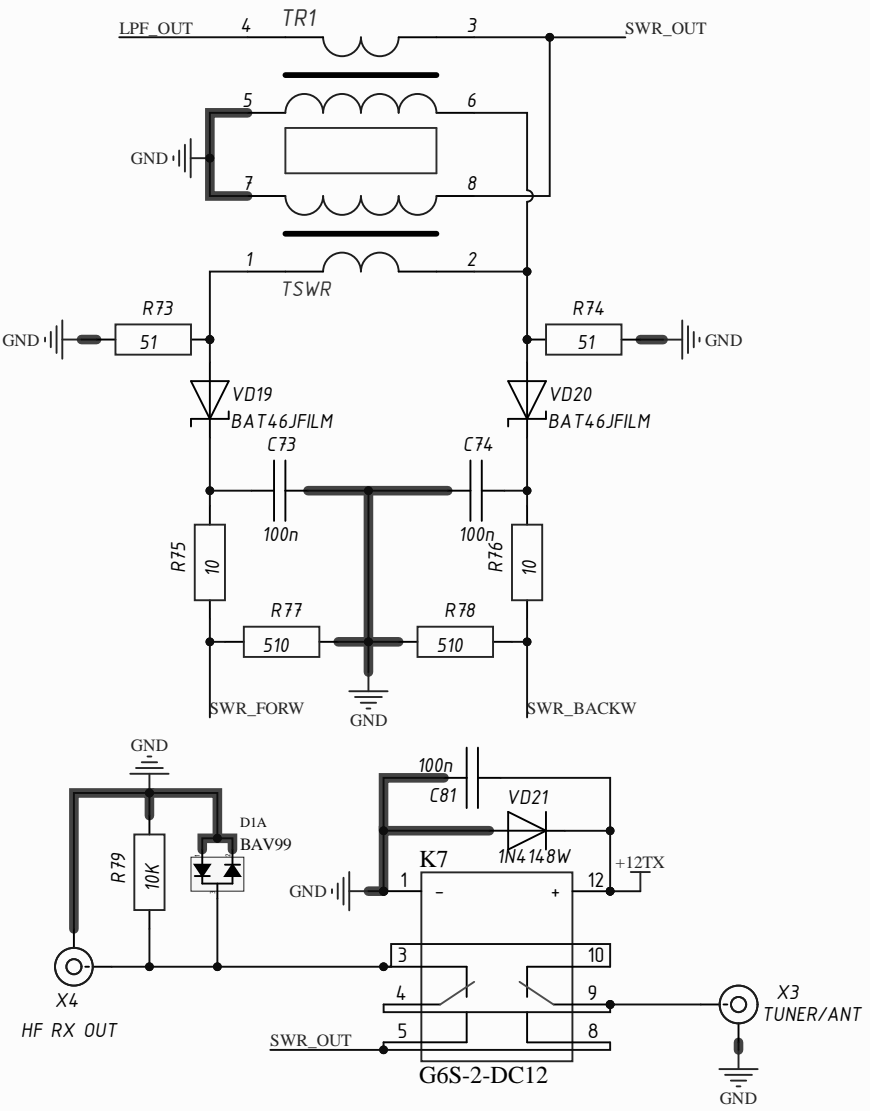
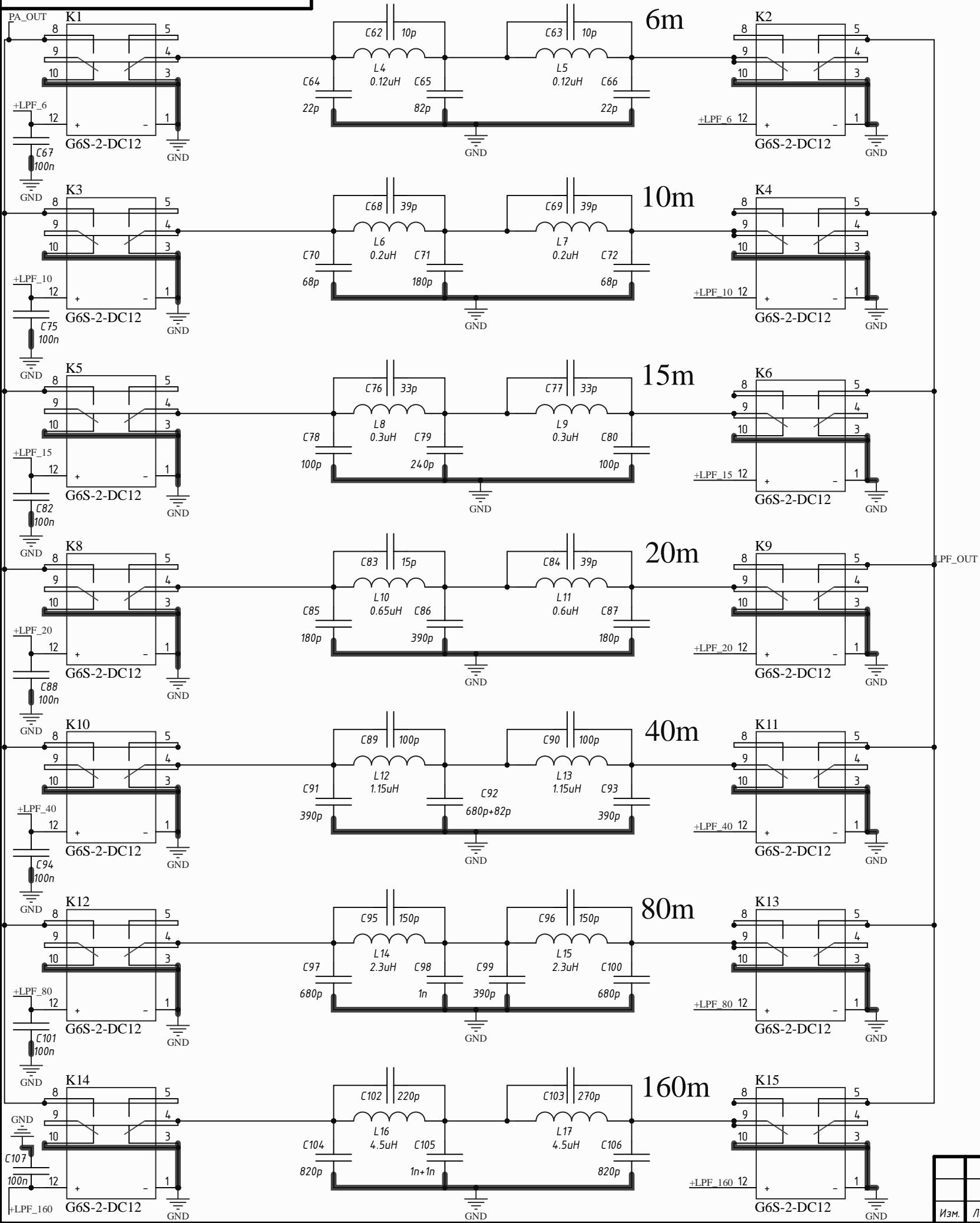
Изм.	Лист	№ докум.	Подп.	Дата

Wolf2 - HF Amp - Amp

Лист

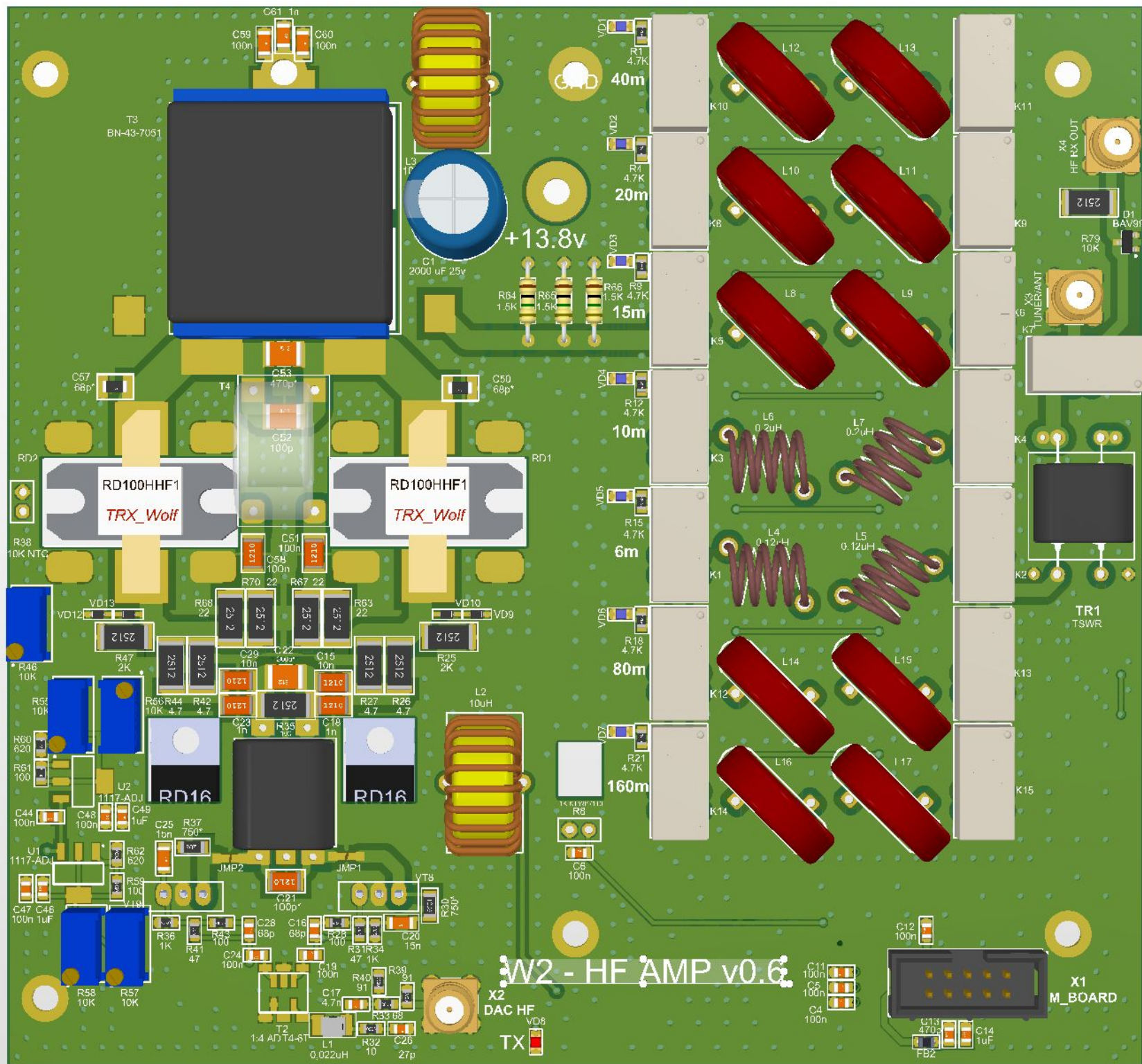
2

W2 - HF AMP - LPF



Подп. и дата
Инд. № дудл.
Взам. инд. №
Подп. и дата
Инд. № подл.

Изм.	Лист	№ докум.	Подп.	Дата	W2 - HF AMP - LPF	Лист
						3



Comment	Description	Designator	Footprint	Libref	Quantity
2000 uF 25V		C1	D135H20	AlumCap	1
470p		C2, C8, C13	CH0805C	Capacitor	3
1uF		C3, C9, C14, C46, C49	CH0805C	Capacitor	5
		C4, C5, C6, C7, C10, C11, C12, C19, C24, C31, C32, C33, C34, C36, C37, C38, C39, C44, C45, C47, C48, C47, C75, C82, C88, C84, C101, C107	CH0805C	Capacitor	26
10n		C15, C29	CH1210C	Capacitor	2
68p		C16, C28	CH0805C	Capacitor	2
4.7n		C17	CH0805C	Capacitor	1
1n		C18, C23	CH1210C	Capacitor	2
15n		C20, C25	CH1206C	Capacitor	2
100p*		C21	CH1210C	Capacitor	1
200p*		C22	CH1812C	Capacitor	1
2.7p		C26	CH0805C	Capacitor	1
2.2uF		C27	CH1206C	Capacitor	1
1u5		C30	CH1206C	Capacitor	1
1n		C36	CH0805C	Capacitor	1
15n		C40, C41, C42, C43	CH0805C	Capacitor	4
68p*		C50, C57	CH1206ATC	Capacitor	2
100n		C51, C58	CH1210C	Capacitor	2
100p		C52	CH1812C	Capacitor	1
470p*		C53	CH1812C	Capacitor	1
470p		C54	CH1206C	Capacitor	1
10n		C55	CH1206C	Capacitor	1
100n		C56, C59, C60, C73, C74, C81	CH1206C	Capacitor	6
1n		C61	CH1206C	Capacitor	1
10p		C62, C63	CH1206ATC	Capacitor	2
22p		C64, C66	CH1206ATC	Capacitor	2
80p		C65	CH1206ATC	Capacitor	1
25p		C68, C69, C84	CH1206ATC	Capacitor	3
68p		C70, C72	CH1206ATC	Capacitor	2
180p		C71, C85, C87	CH1206ATC	Capacitor	3
33p		C76, C77	CH1206ATC	Capacitor	2
100p		C78, C80, C89, C90	CH1206ATC	Capacitor	4
240p		C79	CH1206ATC	Capacitor	1
15p		C83	CH1206ATC	Capacitor	1
220p		C86, C91, C92, C99	CH1206ATC	Capacitor	4
680p-80p		C92	CH1206ATC	Capacitor	1
150p		C95, C96	CH1206ATC	Capacitor	2
680p		C97, C100	CH1206ATC	Capacitor	2
1n		C98	CH1206ATC	Capacitor	1
220p		C102	CH1206ATC	Capacitor	1
270p		C103	CH1206ATC	Capacitor	1
60p		C104, C106	CH1206ATC	Capacitor	2
10n+1n		C105	CH1206ATC	Capacitor	1
BAV99		D1	SO723_132	BAV99	1
24V45A1450W		D41	16-SIP	MT451450N	1
BLM21		F81, F82	CH0805L	F8-1	2
Jumper_2	Jumper	JMP1, JMP2	CON: JUMPER_2	Jumper_2	2
GAS-2 DC12		K1, K2, K3, K4, K5, K6, K7, K8, K9, K10, K11, K12, K13, K14, K15	GAS-2 DC12	GAS-2-12VDC	15
0.002uH		L1	CH1210L	Inductor-2	1
10uH		L2, L3	IND_824	Inductor ring	2
0.15uH		L4, L5	BR1	Inductor ring	2
0.2uH		L6, L7	BR1	Inductor ring	2
0.3uH		L8, L9	T68-0	Inductor ring	2
0.6uH		L10	T68-0	Inductor ring	1
0.6uH		L11	T68-0	Inductor ring	1
1.15uH		L12, L13	T68-0	Inductor ring	2
2.3uH		L14, L15	T68-0	Inductor ring	2
4.5uH		L16, L17	T68-0	Inductor ring	2
4.7K		R1, R4, R9, R12, R15, R18, R21, R24	CH0805R	Resistor	8
3K		R2, R6, R9, R13, R16, R19, R22	CH0805R	Resistor	7
30k		R3, R7, R11, R14, R17, R20, R23	CH0805R	Resistor	7
560		R5	CAT16	CAT10-0804	1
1K KTY81/110		R8	CON: PHS-2	NTC	1
2K		R25, R87	CH2512R	Resistor	2
4.7		R26, R27, R42, R44, R50, R51, R54, R69, R71, R72	CH2512R	Resistor	10
100		R28, R43, R59, R61	CH0805R	Resistor	4
47		R29, R31, R41, R45	CH0805R	Resistor	4
750*		R30, R37	CH1206R	Resistor	2
10		R32, R75, R76	CH0805R	Resistor	3
68		R33	CH0805R	Resistor	1
1K		R34, R36	CH0805R	Resistor	2
100		R35	CH2512R	Resistor	1
10K NTC		R38	CON: PHS-2	NTC	1
91		R39, R40	CH0805R	Resistor	2
10K		R46, R55, R56, R57, R58	RES_3296W	ADI resistor	5
330		R48, R49	CH0805R	Resistor	2
750		R52, R53	CH0805R	Resistor	2
620		R60, R62	CH0805R	Resistor	2
22		R63, R67, R68, R70	CH2512R	Resistor	4
1.5k		R64, R65, R66	R-DIP	Resistor	3
01		R73, R74	CH1206R	Resistor	2
510		R77, R78	CH0805R	Resistor	2
10K		R79	CH2512R	Resistor	1
V77	[NoValue], RD100	RD1, RD2	RD100	N-1	2
1-4 AD74-6.47	Transformer	T1	BN43-202-RD16	TRANS RD16	1
BN-43-7051		T2	TRANS: ACORE2	TRANS: ACORE2	1
BN-43-7051		T3	BN43-002-V2	BN-43-7051-1	1
FTD-43		T4	TRANS OS W2	Trans_1	1
TS4WR		TR1	TANKEM	BN43-342	1
LT1117-ADJ	LT1117CST-ADJ	U1	LT1117CST-3.3	LT1117CST-3.3	1
LT1117-ADJ	LT1117CST-ADJ	U2	LT1117CST-3.3-2	LT1117CST-3.3	1
LED BLUE		VD1, VD2, VD3, VD4, VD5, VD6, VD7	LED_0805B	LED_single	7
LED RED		V108	LED_0805R	LED_single	1
CDSD0323-105C		VD9, VD10, VD12, VD13	SOD323	TVS diod	4
3514		VD11, VD14, VD17, VD18	SMA	Diod Schottky	4
1N4148W		VD15, VD16, VD21, VD22, VD23, VD24, VD25, VD26, VD27, VD28	SOD123	Diod	10
BAT46WELM		VD19, VD20	SOD323	Diod Schottky	2
IRLML9301	Mosfet	V71, V72, V73, V74, V75, V76, V77	SO723_132	IRLML9301	7
MOSFET N-channel transistor 80V, 7A, 91nC, 2.5W, 34mOhm, 75dF, B- TDSOn, -55...+150°C		V78, V79	rd16	MOSFET_N_132	2
BA BOARD	2*5 Pin	X1	CON: BH-10	IOC10	1
DAC HF	RF	X2	CON: SMA	SMA	1
TUNER/ANT	RF	X3	CON: SMA	SMA	1
HF RX OUT	RF	X4	CON: SMA	SMA	1